

HELPING HAWAI'I TOGETHER



- Year in Review
- A Letter from President & CEO, John Fink
- Mission & Identity
- ALICE Initiative
- AUW 211 Statewide Resource Helpline
- Safety Net
- Partner Agencies
- Financial Summary
 - Grants, Trusts, & Foundations
 - Alexis de Tocqueville Society
 - Leadership Donors
 - In-kind Gifts
 - Ānuenue Legacy Society



LETTER FROM PRESIDENT & CEO JOHN FINK

Aloha,

In 2023, Aloha United Way was again pleased to be involved in many areas of advocacy, partnerships, fundraising, & connections throughout our community.

As we all emerged from the COVID cocoon, 2023 saw us make great strides through our ALICE Initiative, the AUW Safety Net, plus our 211 & Substance Use Disorder (SUD) information & referral lines.

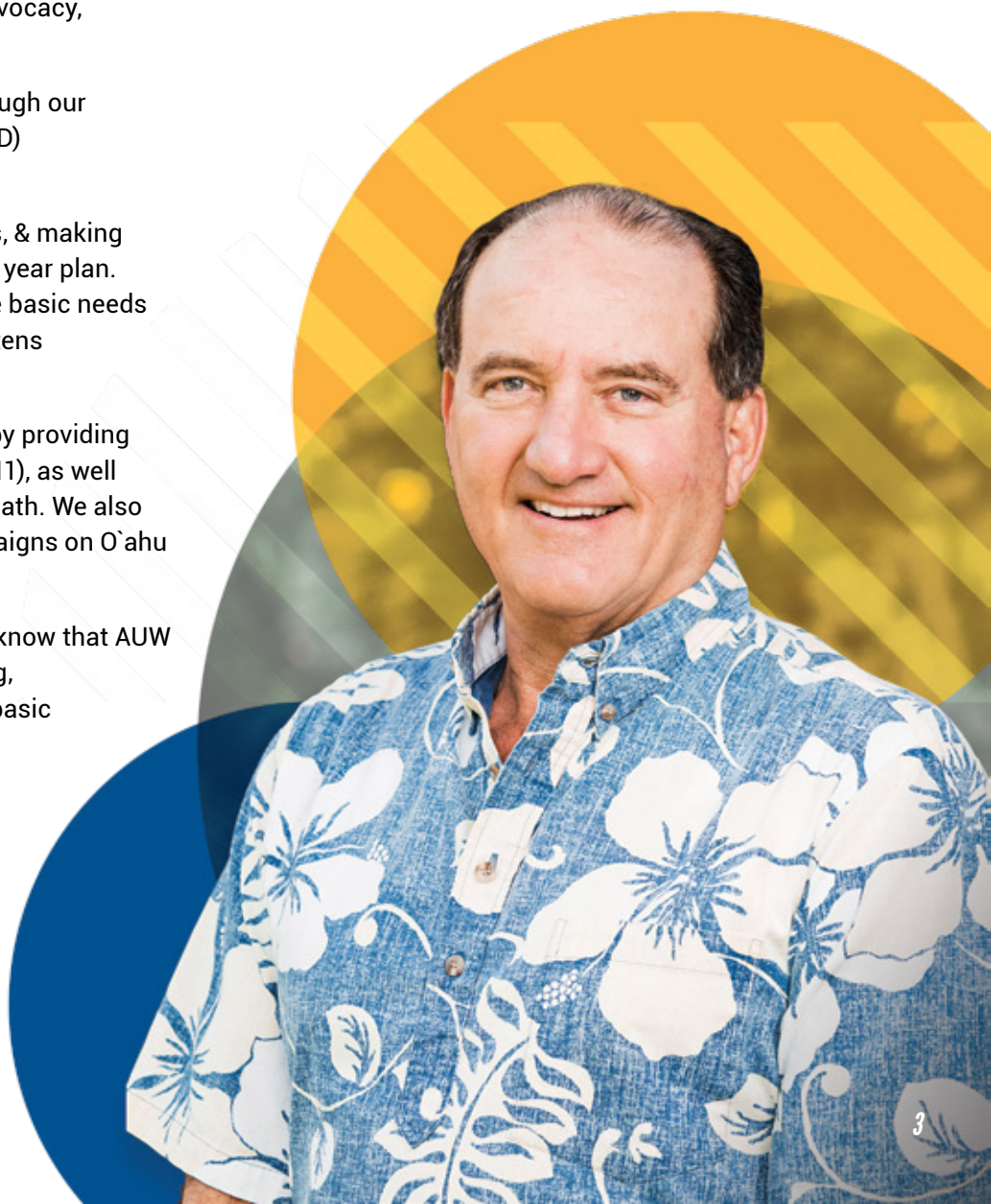
Our ALICE efforts included distributing \$1.5-million to our 17 non-profit partners, & making a qualitative difference through our (17) partners in the second year of our three year plan. Our Safety Net was made up of 28 non-profits who received \$840,000 to provide basic needs throughout the year. AUW's 211 helpline provided information & connections to tens of thousands of local residents needing information, help, and/or hope.

Our Maui Wildfire efforts included working with our friends at Maui United Way by providing more than \$3.4 million in funding, plus answering thousands of calls (through 211), as well as providing vital forms/applications & IT services in the fire's immediate aftermath. We also processed additional funds to Maui through our annual Workplace Giving Campaigns on O'ahu in the back portion of the year.

While the work & local social service needs are never-ending, it is reassuring to know that AUW is there, as it has been for over 105- years. Day in & day out, AUW is ready, willing, & more than able to help our community in times of crisis & to help ensure that basic needs are met & people have greater opportunities in the future.



John Fink
President & CEO



ALOHA UNITED WAY ADVANCES THE HEALTH, EDUCATION, & FINANCIAL STABILITY OF EVERY PERSON IN OUR COMMUNITY BY BRINGING TOGETHER RESOURCES, ORGANIZATIONS, & PEOPLE.

OUR ROOTS

Aloha United Way was originally established by Frank C. Atherton as the United Welfare Fund, under the Chamber of Commerce, in 1919 to create a more efficient way of distributing charitable giving.

LEADING WITH EQUITY

We believe that diversity, inclusion, equity, & justice are essential for a healthy society. It is our responsibility to actively practice & promote these values & condemn all forms of discrimination in our daily work.

TODAY & TOMORROW

Both AUW & Hawai'i have changed over the years. Today, Aloha United Way is an advocate, connector, partner, & resource. We have evolved to become one of the most impactful & innovative organizations in Hawai'i, leading the work to improve lives for generations to come.



THE AUW ALICE FUND

The ALICE Initiative fuels systemic change for working families earning income above the federal poverty line but below what can support their household's basic needs. In 2023, Aloha United Way, in partnership with The Hawai'i Community Foundation, continued its 2nd 3-year cohort, committing at least \$4.5 million over 3 years.

ALICE GRANTEES

- Catholic Charities Hawai'i
- Council for Native Hawaiian Advancement
- Family Promise of Hawai'i
- Feed The Hunger Fund
- Goodwill Industries of Hawai'i, Inc.
- Hawaii Appleseed Center for Law & Economic Justice
- Hawaii Children's Action Network
- Hawaii HomeOwnership Center
- Hawaiian Community Assets Inc.
- IHS, The Institute for Human Services, Inc.
- Institute for Native Pacific Education & Culture
- Kokua Kalihi Valley Comprehensive Family Services
- Legal Aid Society of Hawai'i
- Parents & Children Together
- Partners in Development Foundation
- Residential Youth Services & Empowerment dba RYSE
- Waikiki Community Center



2022 marked the beginning of a new ALICE cohort who are working to bring large-scale systems change to elevate ALICE households. In partnership with the Hawai'i Community Foundation (HCF), Aloha United Way funded 17 nonprofit agencies to increase financial stability & savings & generate access to safe & affordable housing for those below the ALICE threshold. AUW & HCF will collectively put \$1,500,000 per year to these innovative & scalable programs.

THE FOLLOWING PARTNER AGENCIES WERE AWARDED THREE-YEAR GRANTS FROM THE ALICE® FUND FOR 2022, 2023, 2024.

Catholic Charities Hawai'i

Catholic Charities Hawai'i (CCH) will provide the Akahai E Komo Mai (Akahai), a financial wellness program designed to assist ALICE families to achieve household stability & develop the skills to build a pathway out of poverty.

Council for Native Hawaiian Advancement

CNHA's Hawaiian Trades Academy provides workforce development for economically & socially disadvantaged communities. The goal of the program is to raise the household income of families in Hawai'i.

Family Promise of Hawaii

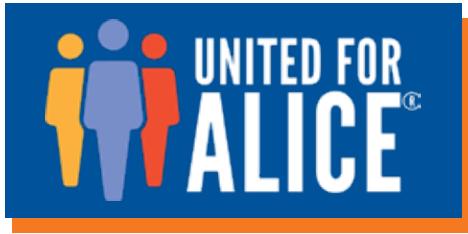
To help ALICE families stabilize, Family Promise of Hawai'i is launching a new initiative called WAA (Working, Attaining, Achieving). The program will support financial stability & an increase in savings for ALICE families.

Feed The Hunger Fund

The Investing in Economic Growth Program aims to increase earned income & savings for ALICE households by providing \$3.5 million in loan capital to low-income entrepreneurs otherwise unable to access loans.

Goodwill Industries of Hawaii, Inc.

Goodwill's partnership with Komohale Services will offer an array of services on-site at Komohale's affordable rental housing to address residents' needs to get ahead, overcome challenges, & gain greater financial independence.



CONT'D: THE FOLLOWING PARTNER AGENCIES WERE AWARDED THREE-YEAR GRANTS FROM THE ALICE® FUND FOR 2022, 2023, 2024.

Hawai'i Appleseed Center for Law & Economic Justice

Hawai i Appleseed will support the work of the ALICE Cohort by: (1) engaging the perspectives & voices of ALICE households to inform & pursue policy change; (2) providing policy research to identify effective means of addressing economic inequity; & (3) supporting collective action to achieve systemic change.

Hawai'i Children's Action Network

Hawai i Children's Action Network will work to build & strengthen the voice of ALICE families to advocate for policies & systems changes that increase household income & reduce household expenses.

Hawai'i HomeOwnership Center

Hawai i HomeOwnership Center provides classes, coaching, & post-purchase services to create sustainable homeowners. Program members are primarily low-moderate income & money management, & understanding credit is the foundation of our curriculum.

Hawaiian Community Assets Inc.

The Economic Self-Sufficiency for ALICE households & Below project will address the need for financial counseling, income supports, & career coaching to improve the financial capacity of ALICE & below households to achieve economic self-sufficiency.

IHS, The Institute for Human Services, Inc.

IHS' Kahauiki Village (KV) program will continue to provide affordable, permanent housing & supportive services for formerly homeless families with earned income. In addition to direct services provided by IHS' KV staff, partner agencies & community groups provide a variety of children's education & enrichment, family strengthening, & parent skill building activities on site.

Institute for Native Pacific Education & Culture

INPEACE helps educate ALICE households through workshops & coaching centered around personal finances. Ho'oulu Waiwai, which translates to "to build wealth," is a community-based program that works to improve financial stability through education.

Kokua Kalihi Valley Comprehensive Family Services

he goal of this project is to increase economic sovereignty among KKV ALICE households by providing, through KKV & its partners, a broader & sustainable array of economic supports, including an expanded public benefits enrollment team & new (for KKV) financial, job & educational guidance services, as a standard component of KKV programming long term.

Legal Aid Society of Hawai'i

This program supports the levers that move ALICE households toward economic stability & mobility, by providing legal information & services that address barriers to mobility.

Parents & Children Together

PACT will provide immediate economic improvement for ALICE families & advocate for policy & systems changes that address the impossible financial burdens for individuals & families that are under resourced.

Partners in Development Foundation

PIDF's Kupa Aina (KA) natural farming project will exp& its community partnerships to provide Hawai i's most at-risk/vulnerable youth with mentorship & vocational training opportunities, financial literacy education, & supplemental services to increase their independence & financial stability.

Residential Youth Services & Empowerment dba RYSE

Residential Youth Services & Empowerment (RYSE) provides a continuum of support for Hawaii's houseless youth aged 18-24. Its new Tiny Village in Wai anae provides a long-term paradigm shift by providing ALICE & house-less youth with dignified spaces that are well integrated into the Hawai i community.

Waikiki Community Center

Waikiki Community Center's ALICE Asset Building & Resource Access program increases financial stability for ALICE seniors & families by creating a seamless network of support that provides the holistic services needed to address their multiple challenges, stabilize their situations, & allow them to thrive.

MAUI WILDFIRE UPDATES FOR 2023 ANNUAL REPORT

How the Maui Wildfires Impacted Our Community

On August 8th, 2023, devastating wildfires began on the island of Maui, Hawai'i. Spreading rapidly due to high winds, the fires consumed over 2,000 acres of land, damaged or completely destroyed more than 3,000 structures, & took 102 members of the community.

While food & supply donations were being collected, local community hubs (like a grassroots Costco) were organized, & an overwhelming number of residents offered their support through financial donations.

As Aloha United Way, we were able to respond immediately to the disaster by creating a Maui Fire Relief Fund, facilitating thousands of calls for assistance that came through our 211 statewide helpline & sending equipment & team members to assist Maui United Way with relief efforts.

Your Contributions Made an Impact:

~ **\$3.4 million dollars** transferred to Maui United Way from the Maui Fire Relief Fund. We continue to send 100% of received donations to MUW on a weekly basis.

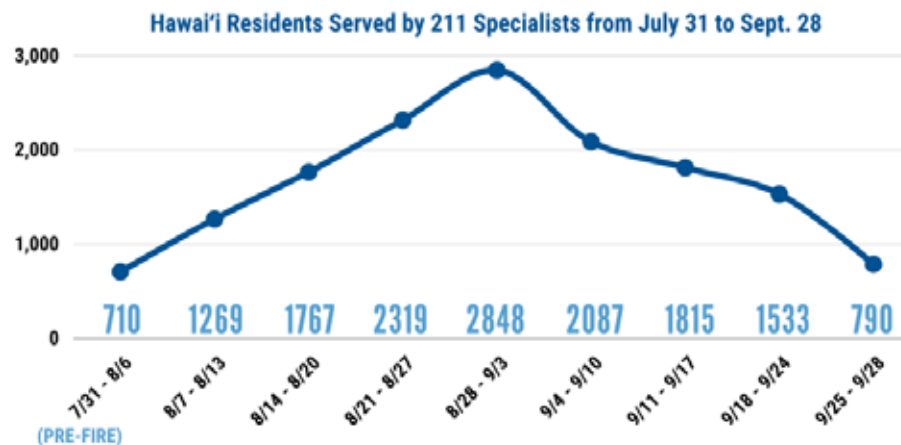
~ **7,000 individuals** living in the fire-impacted zone received \$1,000 in emergency financial assistance through Maui United Way's Direct Cash Assistance Program.

~ **20 Nonprofit Agencies** on Maui providing direct relief to impacted community members received grants from Maui United Way.

Direct Cash Assistance Program

Shortly after the disaster, AUW supported Maui's limited 4-person staff by sending employees & laptops to help set up a response center to process applications for the direct cash assistance program (the first wave of support). The program offered a one-time \$1,000 financial assistance payment, not exceeding \$5,000 per household, for adult fire survivors in Lahaina & Kula.

While the primary method for requesting assistance was online, Aloha United Way also deployed its AUW 211 Helpline, connecting fire survivors with local



community resource specialists who helped them submit applications & identify other services. Our Dedicated 211 team handled over 7,100 inquiries in August, 2023, alone, ensuring wildfire survivors received the help they needed.

AUW 211

Aloha United Way's 211 Resource Helpline is available to everyone in Hawai'i, providing direct referrals to over 4,000 social service resources available in the state. On a normal day, 211 Specialists can expect to receive around 150 calls, texts, & chats from individuals looking for assistance finding resources for financial aid, housing, or health services.

Since the wildfires began:

- **257 Daily average** individual requests for finding resources. This includes all contact from phone call, text message, email, & chat requests.
- **674 phone callers** assisted in one day during the peak on August 31st.
- **15,138 total contacts** to 211 from July 31 to September 28.
- **45% of total contacts** came from Maui County.
- **75% of all Maui contacts** came from Lahaina or Kula zip codes.

AUW STAFF 2023

211 & SUD

Alana Spencer
Alexander Stroble
Amy Higa
Caleb Munsell
Celena Lopez
Chenoa N. Soares
Dantricia Delancy
Elliott A. Plourde
Garret Hashimoto
Grace A. Murillo
Jarelis Paolino
Jennifer Pecher
Josue Osegueda
Karisa Kealiinohomoku
Keenan Mendoza
Kelsi Tamanaha
Lauren McNulty
Leialoha Tumbaga
Leilani Choranay Swartz
Lesley T. Shibata
Luke Kaleolani Kaakau Jr.
Mapo Kesi
Maria Wilcox
Marylee Silva

Melissa Miguel-Santos
Michele Latimer
Michelle Jaren Hayashi
Naomi Koshiishi
Nathaniel Cippele
Rayann Elizabeth Wilmot
Robert A. Cornejo
Ronald A. Betts
Saifagaloa Mauai
Tina Tharp
Zuri Bender
Zelee King

Community Impact

Adam Reeder
Genevieve Noriega Kosay
Jonah Cabiles
Kaitlin Knight Duracher
Kayla Keehu-Alexander
Kimo Carvalho
Lisa J.C. Kimura
Melanie Kaaihue-Yoshida
Sunshine Kuhia-Smith
Vianca Sorkin

Finance & Accounting

Charisse Agraan
Dayle Murakami
Earl S. Fusato
Fraise P. Moore
Galen Nakama
Jennifer A. Langas
Leiolyann Ladore
Norman N. Fisher Jr.
Phylicia Nicole Murray
Valerie Wilson
Victoria Fisher
Wayne Nishikawa

Information Technology

Joei R. Gomez
Kristin P. Cabana
Leinani Rogala
Marissa E. Suehiro
Wayne Kouchi

Management

John L. Fink
Constance Ella Kemper
Elizabeth W. Greenhill
Elizabeth Maae
Isabella Paglianite
Nikki Fukada
Sarah Sunghae Lee
Suzanne Skjold

Marketing & Communications

Agnieszka Westfal-Conboy
Carolyn Hyman
Hailey Kurtenbach
Jacquelyn Carberry
Jady Ojiri

Marian Blythe Palacios
Rayen H. Watanabe
Zachary Lambe

Resource Development

Charmaine M Viegas
Ellen Kazama
Emmaly M. Calibraro
Grayce McCullough
Gregory L. Bushnell
Jenna Richards
Marilyn C. Nimsger
Mary Ellen A. Rubio
Melvin Colquitt
Sarah Leatherby



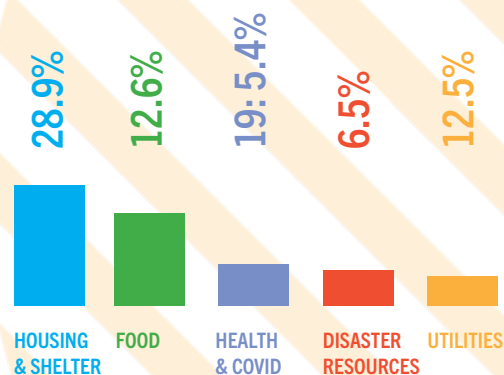
ALOHA UNITED WAY 211

2.1.1

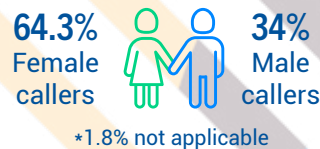
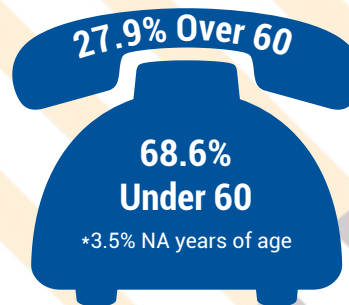
Aloha United Way

AUW's 211 statewide resource helpline offered support for people seeking rental relief, access to food, disaster support services, & everything between. In 2023, AUW 211 served 96,909 neighbors, 46,213 through our online search engine & 50,696 were through calls, texts, & chats to the Helpline. Below, you'll see a few trends that emerged in 2023:

CALL VOLUME BY CATEGORY



NEARLY A THIRD OF REQUESTS FROM KŪPUNA



In 2023, **90.3%** of AUW211 calls were answered within 30 seconds.

9.29% of AUW211 requests are actually text messages.

DID YOU KNOW?

211 uses geo-location. Regardless of phone number area code, those seeking services who are physically in the state of Hawai'i will reach our local call center.

AUW 211 is a local call center staffed by Hawai'i Residents for Hawai'i Residents.

AUW 211 IS MORE THAN JUST A CALL CENTER

- Four of the top 10 websites referring traffic to AUW211.org are local & state government websites.
- 211 Information & Referral partners with the Department of Human Services for SNAP pre-screenings.
- Natural disasters result in higher call volume.
- [AUW211.ORG](https://auw211.org) is available online for our entire community to access & search. The new search site was launched in 2022.

REAL-TIME DATA

Community members, nonprofits, government agencies & the business community can view & search data in close to real-time. That means better response & coordination of efforts. There is no dashboard or resource like it in Hawai'i.

hawaiiidata.org/211data

DISASTER RESPONSE

AUW's 211 is a member of **VOAD** or **Voluntary Organizations Active in Disaster**. When emergencies occur, we respond. We are the conduit for emergency services & act as the primary referral center during any type of crisis.

SUD: 7,515 total clients served

Substance Use Disorder Helpline. For anyone struggling with substance use disorder, AUW now offers case coordination support in partnership with the Hawai'i CARES continuum. auw211.org/sud-care-coordination

SAFETY NET

Each year Aloha United Way works collectively with partners to take action to improve individual & systemic economic, health, & social conditions, & reduce inequalities for all households of Hawai'i. In 2023 \$840,000 was awarded to 28 nonprofits agencies for Safety Net funding to provide basic human needs & support people experiencing crisis in the areas of emergency rent & utility relief, homeless programs & services, food security, childcare, healthcare, & disaster relief.

FOOD SECURITY

Dollars Spent: \$318,000

Clients Served: 151,849

Aloha Harvestm: \$45,000

Boys & Girls Club of Hawai'i: \$45,000

Gregory House Programs: \$10,000

Hawai'i Meals on Wheels, Inc.: \$25,000

Kokua Kalihi Valley Comprehensive Family Services: \$50,000

St. Francis Healthcare Foundation of Hawai'i: \$5,000

Susannah Wesley Community Center: \$40,000

The Pantry by Feeding Hawaii Together: \$40,000

Waianae District Comprehensive Health & Hospital Board, Inc.: \$45,000

YMCA of Honolulu: \$13,000

CHILDCARE

Dollars Spent: \$25,000

Clients Served: 519

Child & Family Service: \$25,000

DISASTER & CRISIS

Dollars Spent: \$75,000

Clients Served: 733

IHS, The Institute for Human Services, Inc.: \$25,000

Legal Aid Society of Hawai'i: \$25,000

Parents & Children Together: \$10,000

Waikiki Community Center: \$40,000

HEALTHCARE

Dollars Spent: \$60,000

Clients Served: 1,882

Healthy Mothers Healthy Babies Coalition of Hawai'i: \$35,000

IHS, The Institute for Human Services, Inc.: \$25,000

RENT, MORTGAGE, & UTILITY ASSISTANCE

Dollars Spent: \$70,000

Clients Served: 319

Domestic Violence Action Center: \$35,000

Helping Hands Hawai'i: \$10,000

The Salvation Army Hawaiian & Pacific Islands Division (O'ahu): \$25,000

SHELTERS & HOMELESS SERVICES

Dollars Spent: \$292,000

Clients Served: 1,873

Family Promise of Hawai'i: \$10,000

Hale Kipa: \$40,000

Ho'ola Na Pua: \$25,000

Honolulu Community Action Program, Inc.: \$45,000

Honolulu Habitat for Humanity: \$25,000

IHS, The Institute for Human Services, Inc.: \$40,000

Mental Health Kokua: \$35,000

Residential Youth Services & Empowerment dba RYSE- \$35,000

Waikiki Health: \$27,000

Women In Need (WIN): \$10,000



SAFETY NET

1 **DISASTER/CRISIS**

Provides a broad range of assistance for individuals & families experiencing crisis with a goal of returning the household to stability. The category includes medical care, mental health services, substance abuse treatment, family violence services, & community disaster response.

2 **RENT/UTILITY**

Provides rent (or mortgage) & utility financial assistance. Agencies may pay rent, security deposit, mortgage, & utility expenses to landlords or providers on behalf of eligible clients.

3 **FOOD**

Provides access to food pantries, food banks, food delivery services & served meals programs.

4 **SHELTER**

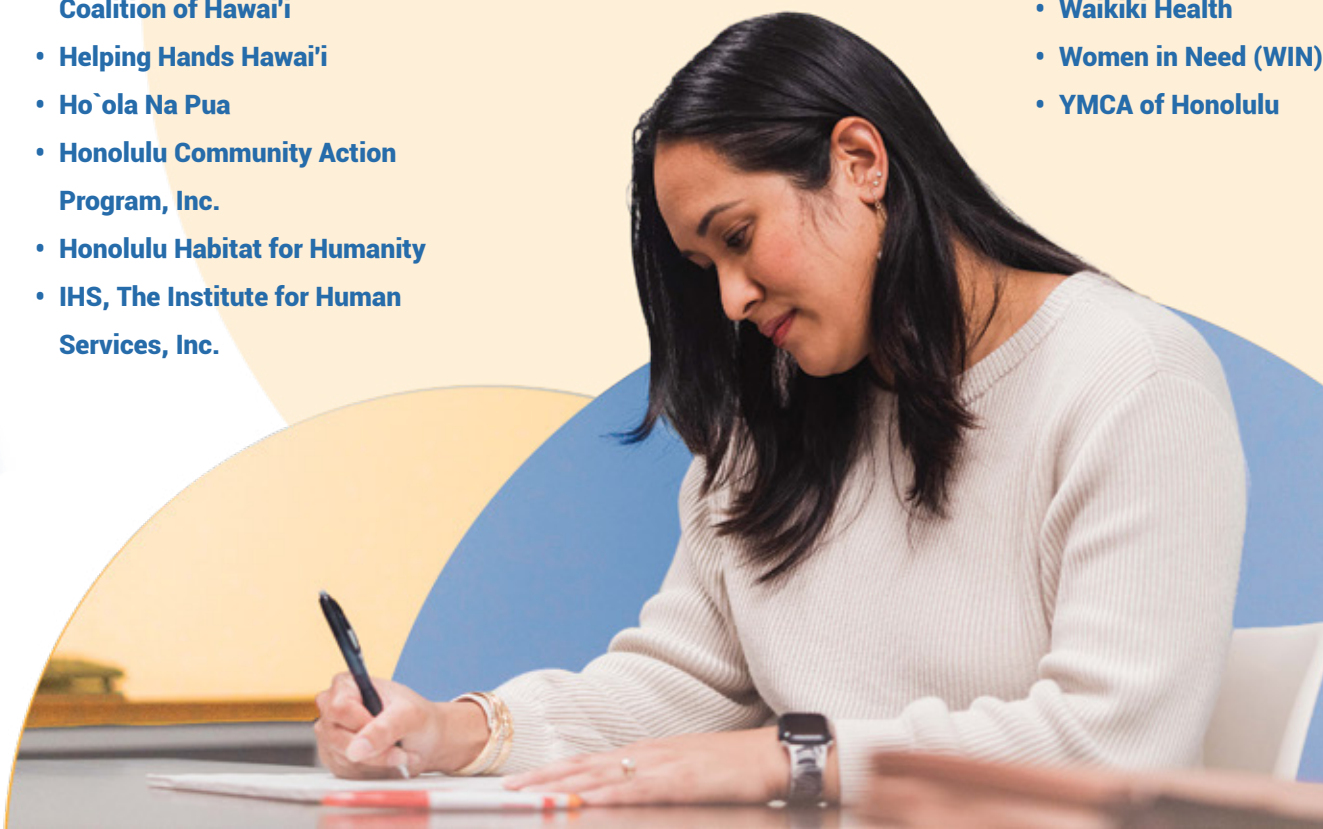
Provides housing & related support services including emergency, transitional, & permanent housing.

5 **TWO-YEAR GRANTS**

Supports startup or pilot programs; programs/services with a higher degree of complexity; initiatives with a greater number of stakeholders or partners; initiatives that require substantial time planning; & new programs that are projected to be financially self-sustaining after the initial two years.

2023 Grantees (Safety Net)

- Aloha Harvest
- Boys & Girls Club of Hawai'i
- Child & Family Service
- Domestic Violence Action Center
- Family Promise of Hawai'i
- Gregory House Programs
- Hale Kipa Inc.
- Hawai'i Meals on Wheels, Inc.
- Healthy Mothers Healthy Babies Coalition of Hawai'i
- Helping Hands Hawai'i
- Ho'ola Na Pua
- Honolulu Community Action Program, Inc.
- Honolulu Habitat for Humanity
- IHS, The Institute for Human Services, Inc.
- Kokua Kalihi Valley Comprehensive Family Services
- Legal Aid Society of Hawai'i
- Mental Health Kokua
- Parents & Children Together
- Residential Youth Services & Empowerment dba RYSE
- St. Francis Healthcare Foundation of Hawai'i
- Susannah Wesley Community Center
- The Pantry by Feeding Hawai'i Together
- The Salvation Army Hawaiian & Pacific Islands Division (Oahu)
- Waianae District Comprehensive Health & Hospital Board, Inc
- Waikiki Community Center
- Waikiki Health
- Women in Need (WIN)
- YMCA of Honolulu



2023 BOARD OF DIRECTORS

OFFICERS:

Patrick “Rick” Ching

Board Chair

Servco Pacific Inc.

President & Chief Operating Officer

Brian Bowers

Vice Chair & Community Impact Chair

Bowers + Kubota Consulting President

Jim Alberts

Secretary

Hawaiian Electric

SVP & Chief Operating Officer

Guy Churchill

Secretary Treasurer & Finance Chair

Bank of Hawai'i

Sr. Executive Vice President

BOARD MEMBERS:

Dan Arita

American Floor & Home

President

Chris Benjamin

Alexander & Baldwin

President & Chief Executive Officer

Rowena Buffett Timms

The Queens Health Systems

EVP & Chief of Administration

Greg Carlson

Kaiser Permanente

Executive Director, CDTs

Daniel Chun

Alaska Airlines

Regional Vice President – Hawai'i

Will Cunningham

UPS

Hawaii Package Operations Manager

Jason Hagiwara

KITV4 Isl& Television

President & General Manager

Rick Hopfer

HMSA

Senior VP, CIO

Jason Ito

Kyo-ya Management Co. Ltd

VP, Labor & Community Relations

Doug Johnstone

The Howard Hughes Corp.

President – Hawai'i

Glen Kaneshige

Board Development Chair

Nordic PCL Construction

President

Erika Lacro

University of Hawaii

VP for Community Colleges

Dee Lim

Women United Representative

Enterprise Holdings

Hawai'i Group Talent Manager

Bettina Mehnert

Architects Hawaii

President & Chief Executive Officer

Savan Patel

SP Holdings

Founder, President/Managing Principal

Megumi Sakae

Marathon Group/BEI Hawaii

SVP, Human Resources & General Counsel

Colbert Seto

Hawaii Dental Service

Chief Information Officer

Su Shin

Governance & Nominations Chair

Hawaiian Telcom

President & General Manager

Dane Teruya

American Savings Bank

EVP, Chief Financial Officer

Carrie Ann Tsutsui

Audit Chair

Hawaii Pacific Health

VP, System Controller

Bill Weeshoff

First Hawaiian Bank

SVP, Marketing Communications Division

For the Years Ending December 31, 2022 & 2023

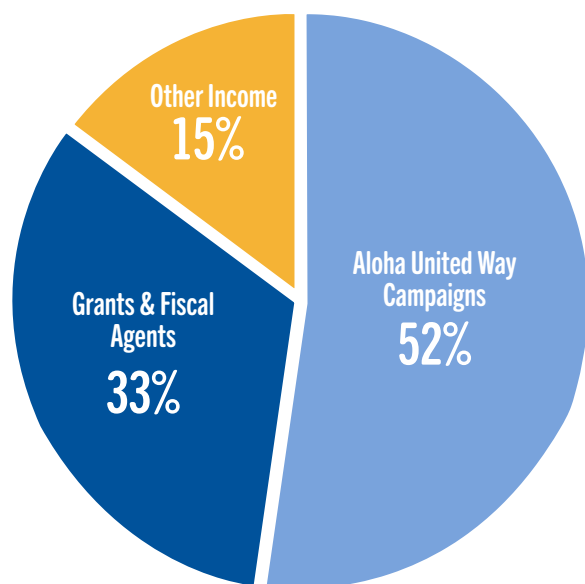
FUNDS RAISED

	2022	2023
Aloha United Way campaigns	\$ 9,504,289	\$ 13,367,335
Grants & fiscal agent ¹	8,416,693	8,430,780
Other income	719,002	3,776,949
Total Funds Raised	\$ 18,639,984	\$ 25,575,064

PROGRAMS & SUPPORT

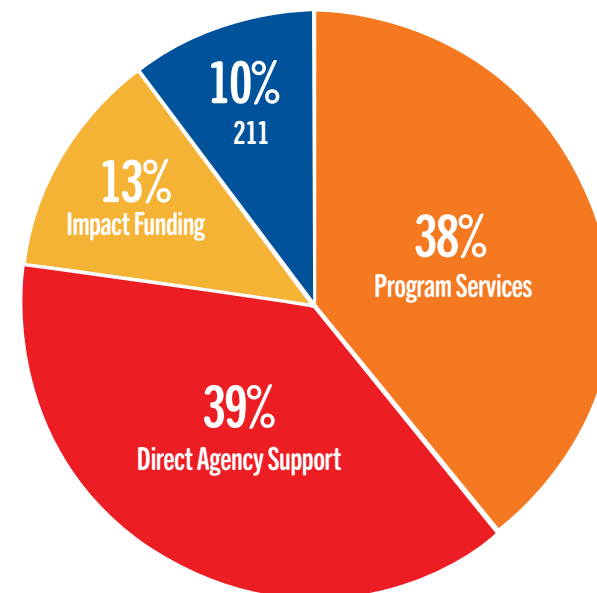
	2022	2023
Donor designations	\$ 3,981,827	\$ 7,787,590
Impact area allocations	2,498,104	2,489,722
Program services ¹	9,761,091	9,735,744
Fundraising	2,071,831	1,795,699
Administration	1,721,563	2,286,357
Pledge loss & miscellaneous	142,886	263,233
Total Programs & Support	\$ 20,177,302	\$ 24,358,345

2023



	2023
Direct Agency Support	\$ 7,787,590
Impact Funding	2,489,722
211	2,023,970
Program Services	7,611,348
	\$ 19,912,630

2023



Note 1:

In 2022 & 2023, Aloha United Way, Inc. (AUW) was awarded a grant under the Continuum of Care (CoC), which is funded by the U.S. Department of Housing & Urban Development (HUD), Permanent Supportive Housing. Of the \$5,635,359 granted by HUD in 2023, approximately \$3,066,321 was expended & earned in 2023. Of the \$5,635,359 granted by HUD in 2022, approximately \$2,613,572 was expended & earned in 2022 and \$2,293,396 was expended & earned in 2023.

Note 2:

AUW Form 990 & audited Financial Statements are available at auw.org/about/financial-information/

Note 3:

In 2022 & 2023 AUW's chief administrative personnel are John Fink, President & CEO & Suzanne Skjold, COO.

SPECIAL THANKS TO THE FOLLOWING DONORS IN 2023
GRANTS, FOUNDATIONS & TRUSTS

Alexander & Anukriti Hittle
 Alfred M. & Charlyn Masini Fund
 Alice E. Davis Estate
 Ann Barclay Rovner
 Anna B. Lindemann Fund
 Aranoff Keiki Fund
 Atherton Family Foundation
 Barbara S. & Allen C. Wilcox
 Bishop Street Funds
 BizGym Foundation
 Bridgestone Firestone Trust Fund
 C. K. Ai Foundation
 Chuck Yim Gee Charitable Trust Fund
 Clark: Aloha United Way Fund
 Community Stabilization Initiative Fund
 Cooke Foundation
 DJ Hirschmann Family Foundation
 EHW Broadbent Foundation
 Ellen M. Koenig Memorial Fund
 Ford Foundation
 Frear Eleemosynary Trust
 G & L Hirokawa Family Fund
 Hands of Hope
 Harold K. L. Castle Foundation
 Harry/Nee-Chang Chock Wong Fund
 Hawai'i Bowl Foundation
 Hawai'i Food & Wine Festival Foundation
 Hawai'i Hotel Industry Foundation
 Hazel H. Takumi Foundation

Hearst Foundation
 Intel (Corporate Foundation)
 Ivena Ziegenhein Fund
 J. Watumull Fund
 Jeffrey Polovina & Cathrine Watson Fund
 John & Allison Lyles Fund
 John & Kathy Marlia Family Foundation
 K.J. Luke Foundation
 Kathryn Inkinen Fund
 Kitaro Watanabe Fund
 Kosasa Family Fund
 Leonora F. & Joseph K. Wee Family Fund
 Lionakis Foundation of the Sacramento Region
 Community Foundation
 Lucy G. Alexander Trust
 Marie Kohli Fund
 McInerny Foundation
 Meahl Family Foundation
 Michael B. Wood Foundation
 Minnie P. Cuthbertson Fund
 Mobile Giving Foundation
 Mohr Family Fund
 Omidyar Ohana Fund
 Peter Drewliner Foundation
 Rainee Barkhorn Charitable Foundation
 Rev. Takie Okumura Family Fund
 Robert M. Ehrhorn Sr. Trust
 Ruby Shigeta Trust
 Samuel N. & Mary F. Castle Foundation
 Schwab Fund for Charitable

Giving
 See Dai Doo Society
 Shidler Investment Corporation
 Strong Foundation
 TE Connectivity Employee Engagement Fund
 The Ben & Miriam Lau Foundation
 The Corinne M. Tosaki Trust
 The Gates Family Foundation
 The Harry & Jeanette Weinberg Foundation
 The Hartley Foundation
 The James & Juanita Wo Foundation
 The Kresge Foundation
 The McVay Family Foundation
 The MGive Foundation
 The Pew Charitable Trusts
 The Schuler Family Foundation
 The Seto Foundation
 The Seymour Terry Trust
 Thomas J. Vincent Foundation Inc.
 TisBest Philanthropy
 Valvon Foundation
 Vanguard Charitable
 Victoria S. & Bradley L. Geist Foundation
 William G. Irwin Charity Foundation

TOCQUEVILLE SOCIETY
\$10,000 or more
 Anonymous (6)
 John & Patricia Nickoll

Alan & Joanne Arizumi
 Alan Oshima
 Amy Ching
 Ann Nakagawa
 Ann Teranishi
 Arnold Martines & Thuy Nguyen-Martines
 Ben & Yvonne Godsey
 Ben & Miriam Lau
 Benjamin & Patricia Ancheta
 Benjamin Schuster
 Blake Bushnell
 Blenn & Ruth Fujimoto
 Brandt Farias
 Brian Bowers
 Bryan Luke
 Burt Podbere & Donna Segal
 Cameron Nekota
 Carey Family
 Carol & Michael May
 Catherine Ngo
 Chris & Melissa Benjamin
 Christopher Dods
 Colbert Matsumoto
 Constance Hastert
 Constance Lau
 Daniel Arita
 David & Kathy Morimoto
 David Okabe
 Dean Shigemura
 Denis & Ella Isono
 Dennis Tsuhako
 Diane Murakami
 Donald C.W. & Iris K.O. Kim Foundation
 Emily Porter

Emmaly & Dean Calibraro
 Ernest Ahumada
 Galen & Patricia Ho
 George Todd & Jean Malia Withy
 Gina Marting
 Gregory Dinges
 Guy Churchill
 H. Mitchell & Bambi D'Olier
 Han & Anne Kim
 James Borris
 Jason & Raylene Nagai
 Jay Shidler (Shidler Foundation)
 Jeff Arce
 Jill Green
 Jill Higa
 Jim Frierson
 Jim Pappas
 Jim Polk
 Joe Wong
 Joel Rappoport & Alexandra Tan
 John & Justine Arrillaga
 John & Shari Fink
 John & Sue Dean
 Jojo Watumull & Family
 Joseph & Marcia Liesch
 Kaulana Young
 Kent & Jean Tsukamoto
 Kevin & Sherri Sakamoto
 Kimarie Matthews
 Lance & Wanda Parker
 Lawrence & Patricia Rodriguez
 Leela & Sam Stake
 Lindsay Kikawa Yoshiki & Eric Yoshiki
 Lori Teranishi
 Luke Yeh

Marilyn Hewson
Marvin & Rae Alica Hall
Mary Sellers & Jerry Russo
Michael & Terri Taylor
Michael Gold & Esme Corbett-Suzuki
Michele & Kevin Saito
Michelle Steitz
Mike & Joyce Ching
Monica Day
Morris Stuebner
Neill & Liz Char
Nelson Befitel
Norbert & Jill Buelsing
Patricia Rissler
Patrick McGuirk
Paul & Lynda Yonamine
Paul Ganley
Peter & Susan Hirano
Peter & Michelle Ho
Peter Dames
Peter Dooher & Liz Jebara
Peter Gal & Jaimie Fauth
Ralph & Erlinda Mesick
Robert & Lori Harrison
Robert Braun
Rodney Harano
Ronald Kikawa
Ross & Dayle Murakami
Sandra McFarlane
Scott Seu & Carrie Okinaga
Shane Mizusawa
Shelee Kimura
Stanley Uyehara
Stephen & Susan Metter
Su Hwa Meisenzahl
Susan Ing & Kent Visher
Susanne & Thom Millard

Terri & Garrett Fujii
Timothy & Sarah Howell
Toshi Sachi
Vance Jones
Vernon Wong & Carla Fukumoto
Walter Dods
Wayne & Laura Sigler
Wesley Yamamoto
William Wigchers

LEADERSHIP DONORS **\$1,000 or more**

Anonymous (12)
Aaron Akau
Aaron Simmons
Abby Royston
Abel Konan
Agatha Viernes
Agnieszka Westfal-Conboy
Aileen Mirchandani
Aimee Noh
Aimee-Marie Lipat
Aitulagi Ala
Akiko Yazawa
Alan Chun
Alan Malamed
Alan Ramos
Albert & Renee Hamai
Alethea Seto
Alex Harris
Alexander Alexiou
Alexander Campbell
Alexandra Fischer
Alfred Itamura
Alice Crockett
Alice Shimabuku
Alicia Moy
Alison Tanaka

Allen De Laura
Allen Yamazaki
Allison Blankenship
Allison Milgard
Allison Nagamine
Allison Roulrier
Allyn Wijneveldt
Allyson Antonio
Alton Kuioka
Alton Murakami
Amanda Jones
Amanda Murphy-Ishikawa
Amelia Fong
Amelia Vaughan
Amy Aguigui
Amy Flanagan
Amy Fujiwara
Amy Honda
Amy Libertini
Amy Poon
Amy Yamakawa
Amy Yonashiro
Anabel Lindsey
Andre Beaudry
Andrea Gaines
Andrea Mailo
Andrew & Donna Lee
Andrew Arakawa
Andrew Jones
Andrew Tagawa
Andrew White
Andy Ah Moo
Angela Bristol
Angela Perryman
Angelica Santiago
Angelina Nakasone
Anita Skara
Ann Barham

Ann Hillenbrand
Ann Katekaru
Ann Marsteller
Ann McGinley
Ann Nishihira
Ann Welton
Anna Barbato
Anna Hu
Anna Oshiro
Annabel Arase
Annette Wedemeyer
Annie Hallstein
Anson Murayama
Antionette Veno
Anton Krucky
Antonio Querubin
Aretina Trepczyk
Arlyn Kollmansberger
Arnold Applebaum
Arnold Suzumoto
Arthur & Carol Katz
Arthur Shak
Ashley Kakazu
Ashley Kealoha
Ashley Kouchi
Ashley Simonds
Ashley Smith
Aspy Palia
Audrey Gima
Audrey Matsuoka
Aviam Soifer
Avian Ku
Barbara & William Killeen
Barbara Gray
Barbara Hemphill
Barbara Krekeler
Barbara Parker
Barbara Schofield

Barbara Yee
Barry & Cora Jim-On
Barry & Camille Gershenovitz
Beatrice Gould
Beau Oshiro
Ben & Anne Yoshino
Benjamin Locquiao
Benjamin Naki III
Benjamin Rosenthal
Bessie Yabut
Bettina Mehnert
Bill Shiroma
Bill Weeshoff
Blanche Fountain
Bob Hampton
Bonnie Tompkins
Brad & Kara Johnson
Brad Gushiken
Brad Shairson
Bradley Masse
Brandon Higashi
Brandon Kamigaki
Brandon Yoshimura
Brenda De Ryke
Brenda Lee
Brennan Tom
Brent Kittle
Brett Aka
Brian Hays
Brian Kang
Brian Kunioka
Brian Morton
Brian Regan
Brian Watase
Brian Yoshii
Brigitte Newcomb

Brittani Capps-Balinbin	Catalent
Brittany Tauiliili	Catherine & Mark Devereaux
Bruce & Suzanne Stillings	Catherine Camp
Bruce & Kimberly McDermott	Catherine Pirkle
Bruce Moore	Catherine Remigio
Bryann Hirata	Catherine Sato
Buchi Asemota	Cathy Matsuoka
Burton Roark	Chad Karasaki
C Michael Thompson	Charlene Harada
Calvin Lee	Charles Furuike
Calvin Pang	Charles Homme
Calvin Say	Charles Kelly
Camden Lachey	Charles Roberts
Candi Hendricks	Charles Stulick
Cara Mazzei	Charles Thompson
Carey Inouye	Charlyn ishihara
Carl Brandenburg	Charmaine Viegas
Carlene Nakamoto	Chastity Kutei
Carlton Jow	Chelsea Seidman
Carol Harrison	Cherie Martyn
Carol Koga	Cheryl & Terry Tyler
Carol Langner	Cheryl Ho
Carol Maxon	Cheryl Inouye
Carol Ono	Cheryl Lien-Fua
Carol Tabata	Cheryl Shozuya
Carole Suzui	Chisato Takeda
Caroline Bacalla	Chris Anjo
Caroline Kunitake	Chris Gardner
Carolyn & Dennis Dahl	Chris Otto
Carolyn Scott	Chris Perry
Carolyn Weygan-Hildebrand	Chris Takeno
Carolynn Bell-Tuttle	Christian Fern
Carrie Ann Tsutsui	Christina Lacy
Carrie Okinaga	Christine Bryant
Carson Schultz	Christine Fe Benito
Cary Koike	Christine Hirano
Cary Kondo	Christine Kaizawa
Casey Tollman	Christine Shigetomi

Christopher Abbott
Christopher Keller
Christopher Lai
Christopher Letoto
Christopher Marumoto
Christopher Simco
Christopher Stewart
Chuck Dando
Cindy Martin
Cindy Suzuki
Cindy Takeda
Claire Kaneshiro
Claire Shimizu
Clarence Gomes
Claudia Akroyd
Clay & Janet Bunch
Clement Guthro
Colbert Seto
Colette Jungles-Galarsa
Colleen Hanabusa
Colleen Kato-Kashiwa
Collin Decosta
Collins Lam
Connie Mitchell
Conor Jerolmon
Conrad Higa
Constance Crutchfield
Corey Goodman
Corliss Ota
Cory Okuda
Courtney Kajikawa
Craig & Lynne Johnston
Craig Bachrodt
Craig Gorman
Craig Ito
Craig Park
Craig Prim
Craig Williamson

Crescent Oshita
Cristina Livesay
Crystie Ogi
Curtis Tiritas
Curtis Tom
Cynthia Clarke
Cynthia Nakasato
Damien Kim
Dan Hirota
Dan Platt
Dan Rudd
Dana Takushi
Dane Teruya
Danette Choi
Daniel & Esther Cartoon
Daniel Boylan
Daniel Burns
Daniel Chan
Daniel Chang
Daniel Fox
Daniel Gluck
Daniel Smith
Daniel Suthers
Danna Keanu
Daphne Oliveros
Dara Young
Darcy Endo-Omoto
Darlene Blakeney
Darlene Morikawa
Darlene Nakayama
Darrel Hoke
Darrell Yamagata
Darren Lindenberger
Darren Okihara
Darren Ota
Darryl Roberts
Dave & Cindie Schlater
Dave McQuiston

David & Janet Arnold
David & Simona Freeman
David Bareng
David Benitez
David Burgess
David Hudson
David Huntley
David Kaneshiro
David Kuriyama
David Lassner
David Lonborg
David Martin
David Molinaro
David Morikawa
David Mulanaphy
David Nichols
David Piatt
David Sink
David Tanoue
David Yew
Davin Kubo
Davin Nakasato
Dawn Hirai
Dawna Emoto
Dayna Matsumoto
Dean Akimseu
Dean Oshiro
Dean Wong
Deanna Hayashi
Debbie Parmley
Deborah Martyniuk
Deborah Miyagi
Debra Luning
Dede Guss
Denisse Au
Dennis Alekel

Dennis Cameron	Eben Chun	Erlinda Alegre	George Wilkens	
Dennis Dobkin	Ediwna Moscatelli	Ernest Lau	Georgia Hill	
Dennis Hokama	Edward Conklin	Eun Ja Cho	Gerald & Monica Evans	Harry Saunders
Dennis Rae	Edward Hanashiro	Eva Belardo	Gerda Bielitz	Harvey Nickelson
Derek Wong	Edward Kim	Eva Moravcik	Getty Chin	Harvey Yamashita
Derrick & Nancy Wong	Edward Pei	Evan & Sara Robinson	Ginny Tiu	Haylee Faustin
Dewi Fukuoka	Edward Yoshimura	Evelyn & Edwin Young	Gladys Watanabe	Hayley Adams
Dexter Ejercito	Edwin Kajiware	Evelyn Rudek	Glen Kaneshige	Heather Allen
Diana Findley	Edwin Paz	Executive Title	Glenn Ishioka	Helen Hardink
Diane Aniya	Elaine Fong	Expedita Tanicala	Glenn Mason	Helmut Graumann
Diane Baker	Elaine Lindsey	Fabricio Mondragon	Glenn Oshiro	Henry Drayton
Diane Chang	Elaine Tse	Fay Yamakawa	Glenn Sakuda	Hiromu Yogi
Diane Kawauchi	Elena Corradetti	Ferdinand & Benito	Glenn Vergara	Hiroshi Matsuoka
Diane Murakami	Eli Lilly	Fletcher Jones Jr.	Gloria Ann Quiocho	Hollis Okamura
Diane Paul	Eliza Marks	Florence Souza	Grace Henderson	Holly Edgington
Diane Terada	Elizabeth Ahana	Fran Barron	Grant & Pam Ring	Hoyt Fortin
Dick Morita	Elizabeth & Joseph Massoud	Franchon Keamo-Young	Grant Fukunaga	Hugh Yoshida
Dirk Yoshizawa	Elizabeth Corbin	Francine Morita	Grayce McCullough	Hulet Family
Dominic Chow	Elizabeth Grossman	Frank & Laura Smith	Grayson Mento	Iris Ito
Donald Delauter	Elizabeth Martin	Fred Speicher	Grayson Nose	Iris Kasashima-Pepper
Donald Jones	Elizabeth Wong	Frederick Lwee	Greg Hiyakumoto	Irvin Kieback
Donald Mackay	Elizabeth Zack	Gabrielle Grange	Greg Wilhelm	Isaac Kosasa
Donald Simpson	Ellen Nashiwa	Garret Matsunami	Gregg Hirano	Isaiah Sato
Donna Medina	Ellora Praharaj	Garret Yoshimi	Gregg Ichimura	J. Frisbee & Susan Campbell
Donovan Koki	Elwin Goo	Gary Copp	Gregg Takayama	Jack Stack
Doreen Kaibara	Emile Alano	Gary Fukumoto	Gregory Carlson	Jackie Easterling
Doug & Tanya Jones	Emilia Jacobson-Fried	Gary Goodwin	Gregory Hee	Jaclyn Garcia
Doug & Sue Howland	Emily Hawkins	Gary Kajiware	Gregory Lee	Jacqueline Tellei
Doug Asbury	Eric Chang	Gary Levin	Gregory Moore	James & Arlene Williams
Doug Johnstone	Eric Chen	Gary Ting	Gregory Sitar	James Barrett
Douglass Sonek	Eric Iwamoto	Gary Trepte	Gretchen Anderson	James Howell
Dr. & Mrs. Richard Nurse	Eric Kashiwamura	Gay McPhail	Guy Kitaoka	James Kahalewai
Dr. Erika Barthelmess & Natalie	Eric Nakatsuka	Gayle Harimoto	Guy Sakamoto	James Larson
Panshin	Eric Pae	George & Keiko Miller	Guy Shibayama	James Lundblad
Dwight Matsumoto	Eric Peterson	George Burkards	Gwen Miyasato	James Michel
Dwight Yeager	Eric Wright	George Kaneshiro	Gwenn Levine	James Moniz
Earl Fusato	Erik Fairfax	George Kuo	Hannah Pahia	James Perkins
Earlyne Hector	Erin Gonzalez	George Schmelzer	Harold Takayama	James Reue

James Williston
 James Yamamoto
 James Yuen
 Jamie Moses
 Jamie Ware
 Jamilyn Bernard
 Jan Kasprzycki
 Jan Lai
 Jana Greer
 Jane Houk
 Jane Schoonmaker
 Janelle Kosaki
 Janelle Yoshida
 Janet Lockwood
 Janet Murphy
 Janis Kushimi
 Janna Nakagawa
 Janna Sye
 Jaqueline Ingamells
 Jared Kashiwabara
 Jasmine Cabrera
 Jason D'Olier
 Jason Ito
 Jason Smith
 Jay Marumoto
 Jayme Nonaka
 Jean Garfield
 Jean I. Torres
 Jean Osumi
 Jean Pennant
 Jean Yee
 Jean-Louis Loveridge
 Jeanne Duffy
 Jed Miyazaki
 Jeff & Michelle Gentine
 Jeff & Katie Currier
 Jeff Callangan
 Jeff Sperring

Jeffrey & Lynn Watanabe
 Jeffrey Cummins
 Jeffrey Eslinger
 Jeffrey Morrill
 Jeffrey Overton
 Jeffrey Sherman
 Jeffrey Shido
 Jenna Kahalepuna
 Jennifer Chen
 Jennifer Diesman
 Jennifer Fukunaga
 Jennifer Kuon
 Jennifer Lam
 Jennifer Russell
 Jennifer Tanaka
 Jennifer Walker
 Jeremy Walling
 Jerilyn Beck
 Jerome Liu
 Jerry Voeller
 Jesse & Kindra Long
 Jessica Sphar
 Jessie Roy
 Jill Hoggard Green
 Jim & Ellen Myerberg
 Jimmy Alberts
 Joan Anderson
 Joann Beall
 Joanne Arizumi
 Joanne Barradas
 Jocelyn Chagami
 Jodi Padon
 Jodie Toyota
 Joel Cablay
 Joel Kobayashi
 Joel Rabin
 Joel Temple
 Joel Yuen

Joella Kawamoto
 John & Lydia Chock
 John Albiso
 John & Allison Lyles
 John & Anne Mapes
 John Andrews
 John Arizumi
 John Blatt
 John Bomke
 John Dicks
 John Farmer
 John Ferguson
 John Hulihe'e
 John Iwaniec & Tracy Gray Ph.D.
 John Ludwick
 John Mapes
 John McKenna
 John Murphy
 John Peyton
 John Roger Morton
 John Tsui
 John Yamane
 Jon & Ellen Polokoff
 Jon Gentry
 Jon Perala
 Jon Streltzer
 Jon Taketa
 Jonathan Auala-Ellis
 Jonathan Carr
 Jonathan Esperanza
 Jonathan Lai
 Jonathan Lucina
 Jondi Anderson
 Joni Nham
 Jordan Conley
 Jose Quiocho
 Joseph & Mary Wrinn
 Joseph Bobich

Joseph Brown
 Joseph Lilio Jr
 Joseph Marshall
 Joseph Ventura
 Joseph Viola
 Josh Feldman
 Joy Aipoalani
 Joy Gangloff
 Joy Ishiara
 Joyce Hesby
 Joyce Matsui
 Joyce Wasserstein
 Judith Correa
 Judy & Bob Davis
 Judy Peterson
 Julia Kelly-Pankow
 Julianne Kramer
 Julie Morley
 Julie Smolinski
 June Fernandez
 Junko Ady
 Junko Kamiya
 Junko Rodby
 Justin Valdez
 Justine Hura
 Kahea Williams
 Kahlil Allen
 Kai Tirrell
 Kaleo Kekoolani
 Kaleo Schneider
 Kanani Silva
 Kanipe Family
 Kara Kitazaki-Chun
 Karen Cox
 Karen Kosasa
 Karen Nakasone
 Karen Sahara
 Karen Shigematsu

Karen Tiller Polivka
 Karl Kobayashi
 Karl Yoneshige
 Karon Lowenstein
 Kasey Yamashita
 Kate Lamb
 Katherine Prendergast
 Kathleen Chu
 Kathleen Wagner
 Kathryn Ambrose
 Kathy Sokugawa
 Katrina Wu
 Katsuo Yamashiro
 Kay Rouse
 Kay Swedberg
 Keene Fujinaka
 Keiko Inouye
 Keith Asato
 Keith Debusca
 Keith Kaneshiro
 Keith Molina
 Keith Nouchi
 Keith Tamura
 Kekumaielani Obrey
 Kelii Garner
 Kelly LaPorte
 Kelton Kato
 Ken Spence
 Kendra McBride-Nelson
 Kennedy Wilson
 Kenneth Calimpong
 Kenneth Konig
 Kenneth Kupchak
 Kenneth McLean
 Kenneth Piehl
 Kent Blazy

Kent Lau	L Paige Marvel
Kent Lucien	Lacey Nakaguma
Keriann Osada	Lan Chung
KerryLynn Vea	Lanae Santos
Kevin Conway	Lance Ichimura
Kevin Katsura	Lance Nakamura
Kevin Kumashiro	Lance Okuda
Kevin Leong	Lani & Uson Ewart
Kevin McCary	Lani Fernandez
Kevin McCrary	Larry Goeas
Kevin Shields	Lauloa Fereti
Kevin Yoneshige	Laura Bickle
Kiana Kam	Laura Dang
Kiha Sai	Laura Guinn-Hall
Kim Dadgar	Laura Ryan
Kimberly Childress	Lauralei Tanaka
Kimberly Hagi	Laurie & Ray Van de Riet
Kimberly Yatomi	Laurie Luczak
Kimberly-Clark	Laurie Sickels
King Peterson	Lawrence Ishii
Kirsten Sahota	Lawrence Okinaga
Kisan Jo	Lea Nakamura
Kreg Gotsch	Leanne Nikaido
Krista Lunzer	Lee "Alana" Cody
Kristen Yoshida	Lee Chimerakis
Kristi Ebanes	Lei Rogala
Kristi Kawada	Lei Zeng
Kristi Lefforge	Leif Ericson
Kristi Maynard	Leigh Shiroma
Kristin Hannah	Leilani Garner
Kristine Sato	Leilani Hackney
Kristy Boland	Len Tanaka
Kuinivia Leafa	Leona Anderson
Kurt Murata	Leonard Fernandes
Kurt Tsue	Leonard Leong
Kyle Bischoff	Leonard Urbanowicz
Kyle Sakamoto	Lesley Yost
Kyle Weighner	Lesley Zehner

Leslie Letulle
 Leslie Nishimura
 Leslie Otten
 Lester Nakamoto
 Lester Ng
 Letitia Hickson
 Lin Peterson
 Linda Dickerson
 Linda Hargreaves
 Linda Nakamura
 Linda Rasmussen
 Linda Stanley
 Linda Sue Spencer
 Lisa Ann Kiuchi
 Lisa Berard
 Lisa Bowden
 Lisa Harris
 Lisa Nakama
 Lisa Rapp
 Lisa Wong
 Lisa Young
 Lisa-Ann Pang
 Liuone Faagai
 Lianne Rocheleau
 Lloyd Arakaki
 Lois Yamauchi
 Lon Renard
 Lorena McGovern
 Lori Higa
 Lori Isara
 Lori Kahikina
 Lori Pacarro
 Lori Yoneda
 Lorin Bettencourt
 Lorraine Hirokawa
 Louis Chun
 Lyle Tamagawa
 Lynn Tam

Lynne Reinhardt
 Ma Judy Ilano
 Mahawa Sam
 Malcolm Michels
 Manatu Tokelau
 Mandi Alameda
 Marathon Oil
 Marc Inouye
 Marc Kartman
 Marcia Wright
 Marcine Friedman
 Marco Abbruzzese
 Margaret Crowell
 Margaret Dang
 Margaret Harada
 Margaret Soon
 Margaret Woodhead
 Marian Roberge
 Marie Kohli Fund
 Marilyn Dunlap
 Marilyn Moku
 Marion Elniski & Don Murphy
 Marion Glober
 Marissa Machida
 Marjorie Moore
 Mark & Betty Noguchi
 Mark & Marcia Vigren
 Mark Besch
 Mark Bubenik
 Mark Burak
 Mark Demetre
 Mark Gentry
 Mark Hamlin
 Mark Kawakami
 Mark Moser
 Mark Mugiishi
 Mark Murakami
 Mark Recktenwald

Mark Rognstad
 Mark Sora
 Mark Tokito
 Mark Valdez
 Mark Yamakawa
 Marlene Kam
 Marlon Garces
 Marsha Colotario
 Martha Greiner
 Mary Alice Evans
 Mary Ann Garcia
 Mary Bruketta
 Mary Hakoda
 Mary Howell
 Mary Lee Young
 Mary Yoshioka
 Masakazu & Elsie Maruno
 Mathew Sagum
 Matt Pollard
 Matthew Cox
 Matthew Ligocki
 Matthew Takamine
 Megan Donovan
 Megan Hackett
 Megan Shaw
 Mel Colquitt
 Melanie Horikami
 Melanie King
 Melanie Pfingsten
 Melissa Matsuura
 Melissa Torres-Laing
 Melvin Miyamoto
 Meredith Ching
 Mia Helminiak
 Michael & Lauri Walsh
 Michael & Susan Jump

Michael Brogowicz	Mike Betz
Michael Bulcholski	Mike Kawamoto
Michael Choy	Mike Wu
Michael Ciaramitaro	Miranda Tsai
Michael Decaprio	Mitchell Andrews
Michael Frank	Momi Akimseu
Michael Gandolfo	Mona Jarvis
Michael Holguin	Monica Wong
Michael Ida	Morris Miyose
Michael Inouye	Morris Rabinko
Michael Jones	Moses Kalili
Michael Kamaka	Mulinfe Hanneman
Michael Kanemoto	Myron Monte
Michael Kim	Nadine Takahashi
Michael King	Nancy Copp
Michael Krieg	Nancy Miura
Michael Latham	Natalia Petrie
Michael Masuda	Natalie Fogle
Michael Miller	Natalie Ota-Zane
Michael Mills	Natalie Taniguchi
Michael Mishima	Nathan Knutsen
Michael Pecaut	Nathan Lee
Michael Perlberg	Nathan Ramler
Michael Rose	Neal Milner
Michael Stollar	Neal Yokota
Michael Tanoue	Ned Rodrigues
Michael Tom	Neil & Margaret Erath
Michael Unebasami	Nichole Begonia
Michael Woloz	Nichols Family Fund
Michael Yamada	Nick Tasaka
Michele Tabios	Nicole Reimers
Michelle Hulst	Nikki Nguyen-Tengan
Michelle Kirk	Niklaus Schweizer
Michelle Mak	Nisha Choksi
Michelle McCully	Nita Williams
Michelle Sato	Nona Tamanaha
Michelle Stofle	Noriko Ostrem
Michiko Hikita	Norman Ahu

Norman & Dr. Cheri Gentry
 Norman Hong
 Norman Okimoto
 Pam Sato
 Pamela Fujinaka
 Pankaj Malviya
 Pat Lynch
 Patricia Basso
 Patricia Bazin
 Patricia Calvy
 Patricia Hamamoto
 Patricia Lake
 Patricia Lee
 Patricia Scarborough
 Patricia Steinhoff
 Patricia Tedrick
 Patrick Duarte
 Patrick Kirch
 Patrick Williamson
 Patsy Nanbu
 Patti Fujimoto (Kino)
 Paul Asano
 Paul Demkovich
 Paul Fox
 PAUL ITO
 Paul K Lindo
 Paul Kaiser
 Paul Maehara
 Paul Silen
 Paula Wallace
 Paz Fonacier
 Peihsuan Wu
 Penelope & Eugene Borax
 Penelope Tong
 Pepito Galvez
 Perry Pernicano
 Peter & Barbara Cohen
 Peter Besenbruch

Peter Danbury
 Peter Hanauer
 Peter Hayase
 Peter Krey
 Peter Sheehan
 Peter Young
 Pey L Su
 Phil Williams
 Philip Hanson
 Philip Mow
 Philip Sammer
 Phillip Apostolou
 Prinya Friel
 Prudence Quebatay
 Puaonani Ahuna
 Quentin Machida
 R. Mizushima
 Rachel Anfinson
 Rajib Choudhury
 Ralph Okazaki
 Ralph Portmore
 Ralph Tasaka
 Randall Litten
 Randall Templeton
 Randall Urasaki
 Randall Wakumoto
 Randall Young
 Randolph Hara
 Randy Au
 Randy Faatau
 Randy Perreira
 Randy Scheer
 Raoul Magana
 Ravi & Joyce Ann Vig
 Raymond Bennett
 Raymond Bristol
 Raymond Ma
 Raymond Munger

Reagan Muronaga
 Rebecca Asato
 Rebecca Choy
 Rebecca Jandoc
 Regina Luuloa
 Regina Mello
 Reid Harada
 Reid Sasaki
 Rene Kamita
 Rennette Miller
 Rhonda Griswold
 Rian Dubach
 Rian Tatsutani
 Richard A Eroen
 Richard & Barbara Diver
 Richard & Terry Clifton
 Richard Bert
 Richard Cox
 Richard Haining
 Richard Hopfer
 Richard Mai
 Richard Manshardt
 Rita Aponte
 Rita Jugo
 Rob Robinson
 Robert & Hazel Hirayama
 Robert & Nancy Rocheleau
 Robert Chamberlain
 Robert Cruz
 Robert Eberts
 Robert Fujioka
 Robert Honda
 Robert Kistner
 Robert Krekel
 Robert Pascua

Robert Peters
Robert Starke
Robert Van Tassell
Robert Whittier
Robert Wo
Robert Yee
Roberta Chu
Roberta Nickel
Robin Hadwick
Robin Ohern
Robin Yount
Robyn Tanaka
Rodney Chong
Rodney Maile
Roger Babcock
Roger Khlopin
Ron Kimura
Ron Simon
Rona Totoki
Ronald (Ron) Dobashi
Ronald Brown
Ronald Chang
Ronald Hanstein
Ronald Peyton
Ronald Rhoades
Ross Nakamura
Ross Sakuda
Rowena Adachi
Rowena Buffet Timms
Roxann Bulman
Roxanne Laboy
Roy & Janet Kiriara
Ruby Edwards
Ruey Jane Ryburn
Russ & Linda Pangborn
Russell Harris
Russell Inouye
Russell Loo

Russell Souza
Russell Young
Ruth Erickson
Ruth Miller
Ryan Cummings
Ryan McCormick
Ryan Miyamoto
Ryan Mock
Ryan Yoshida
Ryenne Nakamoto
Sabine & Robert Hildebrand
Sada Okumura
Sally Dunan
Sam & Lisa Verhovek
Sanae Fujimoto
Sandra Abelaye
Sandra Doyle
Sandra Hayashida
Sandra Horita
Sandy Harvey
Sara Galvin
Sarah Morihara
Savannah Rezabek
Scott & Charldene Schaefer
Scott & Kellie Schmidtke
Scott Birchall
Scott DeGhetto
Scott Ezer
Scott Kuioka
Scott Kuwabara
Scott Morita
Scott O'Neal
Scott Parker
Scott Rodie
Scott Taber
Scott Turn
Scott Yonesaki
Scott Young

Sean Haggerty
Sean Scott
Sean Taylor
Serge King
Shanae Souza
Shane Luuloo
Shannon Asato
Shari Fink
Sharlene Ginoza-Lee
Sharon Crofts
Sharon Hamamoto
Sharon Kato
Sharon Keith
Sharon McDonald
Sharon Suzuki
Sharon Twigg-Smith
Shauna Pantohan
Shawn Benton
Shayne Serai
Sheila Watumull
Sheilah Kast
Sheldrake Stibbard
Shelley Richey
Shereyn Hersch
Sheri Higa
Sherri Okinaga
Sherri Tokuda
Sherry Menor-McNamara
Sheryl Bannon
Sheryl Miura
Sheryl Waianae
Shiomi Matsuda
Shizuko Nagashima
Shunji & Jane Adachi
Sid & Sara Johnson
Simone Perez
Sonja Hirasuna
Staci Balmoja

Stacy Armstrong
Stafford Kiguchi
Stan Hudson
Stan Kuniyuki
Stanley Kuriyama
Stephanie Heu
Stephanie Nishimura
Stephen & Amy Corbisier
Stephen Borland
Stephen Bradley
Stephen Enos
Stephen Irwin
Stephen Kaneshiro
Stephen Williams
Steve & Kaayla Roth
Steve & Linda Nagata
Steve Arashiro
Steve Johnson
Steven Alm
Steven Araki
Steven Felsher
Steven Glazier
Steven Kakuni
Steven Marshak
Steven Mountain
Steven Nakahara
Steven Podolsky
Steven Sylvester
steven vitale
Sue Hillmann
Sue Miller
Sung-II Yoo
Susan Chan
Susan Ezawa
Susan Fukunaga
Susan Harada
Susan Muramoto-Willy
Susan Thoemmes

Susan Utsugi
Susan Yokoyama
Susyn Fritz
Suzanne Enersen
Suzanne Nemetz
Suzanne Skjold
Suzanne Vanderklisch
Suzanne Young
Swartz Family
Syn Chao
Tad Palmer
Tad Swida
Takako Shimomura
Takuya Mitsueda
Tammy Kaetsu
Tammy Miyashiro
Tammy Nakamatsu
Tammy Toyama
Tara Miyashiro
Taylor Hitchingham
Taylor Lee
Taylor Rae
Terrence George
Terri Okada
Terry Sasamura
Terry Uyehara
Thelma Kam
Theodore Metrose
Theresa Blanco
Theresa Uchida & Keith Uchida
Therese Dickerson
Thomas & Cynthia Klimmeck
Thomas Duncombe
Thomas Harrison
Thomas Muraoka

Thomas Williams
Thomas Young
Tierney Morikawa Rostron
Tiffany Chang
Timothy Cottrell
Timothy Laborte
Timothy Wilhelm
Tina Andrade
Todd Frazier
Todd Mayeshiro
Todd Ohira
Todd Yamanaka
Tom Mendes
Tomoko Tanega
Tonya Wade
Torrie Inouye
Tracey Lyum
Traci Maeda
Tracy Aiwohi
Tracy Aruga
Tracy Hayashi
Travis & Karen Meredith
Travis Gomez
Trong Son
Trung Quach
Ululani Hirohata
Unyong Nakata
V. Shannon Bennett
Vaai Ala
Valaine Vasquez
Valentine Day Iwamasa
Valerie Takata
Vanessa Foster
Vera Wright
Verna Muraoka
Vernon Hirata
Veronica Bragassa
Veronica Wong

Vicente Aragon
Vicki Lau
Victoria Fisher
Victoria Ichihara-Gorman
Vija Sehgal
Vinay & Kanika Jain
Vincent Flores
Vincent Perez
Violet Kusatani
Virginia Beck
Virginia Benson Wigle
Volker Hildebrandt
Walter Quisenberry
Warren & Ruth Togami
Warren Luke
Wayne & Elaine Tamashiro
Wayne Kauwe
Wayne Rubio
Wayne Takahashi
Wayne Teruya
Wayne Yamamoto
Wendy Fujimoto
Wendy Hinden & Kathryn Livelli
Wendy Kishida
Wendy Nakasone
Wendy Trinh
Wenjing Tang
Wenli Lin
Wesley Kurakake
Wesley Odani
Wilfred Ikemoto
Wiliama Sanchez
Willard Haraguchi
William & Gail Atwater
William Albritton
William Fernandez
William Fletcher
William Hart

William Hobbs
William Kumagai
William Liesman
William Liggett
William Makaneole
William Rubel
William Springer
William Ward
Wilma Kanda
Yoshi Sawamura
Young Choo Kim
Young Woo
Yuan-Meng Chen
Yukiko Arai
Yuxuan Yang
Yvette Barradas
Zach Cantor
Zenaida Estrada





Would you like to create a lasting legacy while planning for your future & that of your loved ones? A planned gift to Aloha United Way can provide critical, ongoing support to our poverty-fighting initiatives. Join us to help struggling Hawai'i residents create brighter futures for themselves & their families for generations to come.

FIRST, WHAT IS A PLANNED GIFT?

A planned gift can be as simple as naming Aloha United Way as a beneficiary in your will, trust, retirement plan, life insurance policy or other financial accounts. Planned gifts are added to our Endowment Fund, a permanent capital reserve that supports our work today, tomorrow & for generations to come. When you make a planned gift to AUW, you become a member of our Ānuenue Legacy Society.

WHAT ARE SOME GIFT OPTIONS?

- Retirement Accounts including IRAs
- Life Insurance
- Wills & Trusts (bequest)
- Stock & Real Estate - using appreciated property to fund a planned gift
- Life Estate (valuable property you use during lifetime with arrangements to give to charity upon death)
- Charitable Gift Annuity (CGA) (income producing)
- Charitable Remainder Trust (CRT) (income producing)
- Charitable Lead Trust (CLT)
- Donor Advised Fund (DAF)

WHAT DOES A PLANNED GIFT OFFER?

- A legacy that will impact generations to come
- A way to honor someone else's life & name into the future
- Potential for lesser tax burdens for family
- Potential estate tax savings

Please contact **Emmaly Calibraro** at (808) 543-2204 or email emmaly@auw.org.

ĀNUENUE LEGACY SOCIETY

Rainbows may be a daily occurrence in Hawai'i, but each one is special, bringing beauty into the lives of all touched by it. As a member of the Ānuenue Legacy Society, you will have the opportunity to attend special behind-the-scenes events at Aloha United Way & to connect with others who have chosen to make a planned gift.

ĀNUENUE LEGACY SOCIETY DONORS

Anonymous (11)
Andrew Wong
Billy Ellis
Chad D. Snater
Cynthia Winegar
David Kirkeby
David W. Thomas
Dean & Emmaly Calibraro
Deborah & Eugene Huebler, III
Diane Baker
Donald Mair & Joan Yahagihara
Douglas & Donna Hom
Edison M.C. Chong
Edward S. Van Lier Ribbink
Grace & Rylan Nushida
Helenann Lauber
Howard H. & Audrey M.A. Karr
Ilaniahloha Kanakaole
Jamie Musshorn
Jessica Dalrymple
Jessica L.S. Lum

Joyce Mitsunaga
Lisah-Marie Purcell
Lorraine Akiba
Lourdes Wamsley
Mako Ikemiyagi
Marivic Dar
Michael & Trudie China
Michael Gold & Esme Corbett-Suzuki
Mike & Terry Taylor
Nicholas Thornton
Norman Baker
Patricia A. Pietschmann
Randall Yee
Renee Arakaki
Richard J. Pietschmann III
Robert & Shera Hiam
Robert Armstrong
Roberta Rinker-Ludloff
Rodney Cavaco
Warren Wee
Wendy Abe